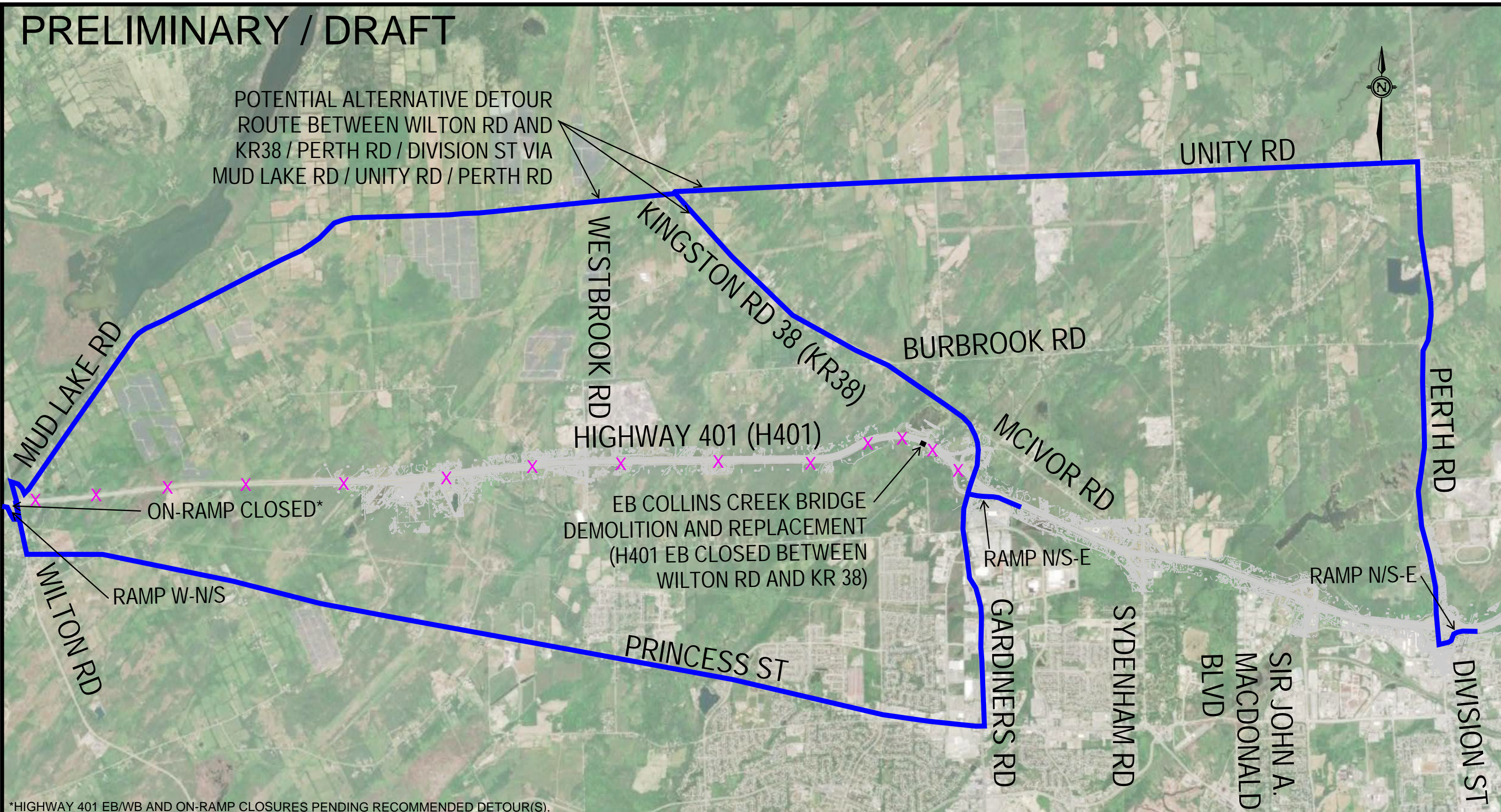



PRELIMINARY / DRAFT


POTENTIAL ALTERNATIVE DETOUR ROUTE BETWEEN WILTON RD AND KR38 / PERTH RD / DIVISION ST VIA MUD LAKE RD / UNITY RD / PERTH RD



*HIGHWAY 401 EB/WB AND ON-RAMP CLOSURES PENDING RECOMMENDED DETOUR(S).

LEGEND

 EASTBOUND TRAFFIC

 H401 EB CLOSED*

ALTERNATIVE 1


- HIGHWAY 401 EB TRAFFIC DETOUR. *HIGHWAY 401 EB AND ON-RAMP CLOSURES PENDING RECOMMENDED DETOUR(S).
- EXISTING EB COLLINS CREEK BRIDGE IS DEMOLISHED AND REPLACED WHILE HIGHWAY 401 EB IS CLOSED.



PRELIMINARY DESIGN AND ENVIRONMENTAL ASSESSMENT

HIGHWAY 401 BRIDGE AND INTERCHANGE IMPROVEMENTS - WEST OF COLLINS CREEK TO EAST OF SYDENHAM ROAD

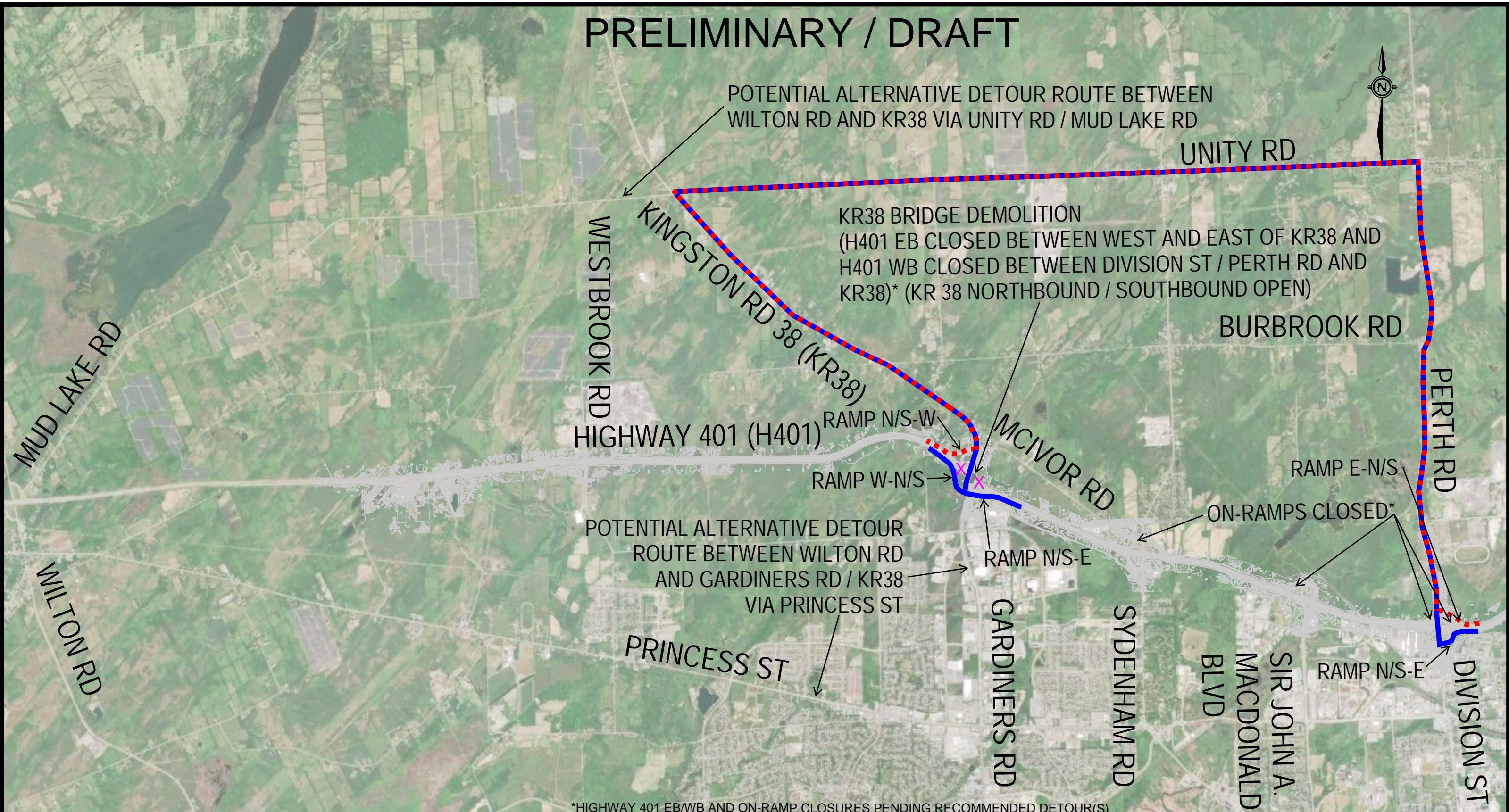
EASTBOUND (EB) COLLINS CREEK BRIDGE DEMOLITION DETOURS
ALTERNATIVE 1 - PLANNED HIGHWAY 401 CLOSURES WITH TRAFFIC DETOURS

GWP 4029-20-00







 DATE: MAR 2024

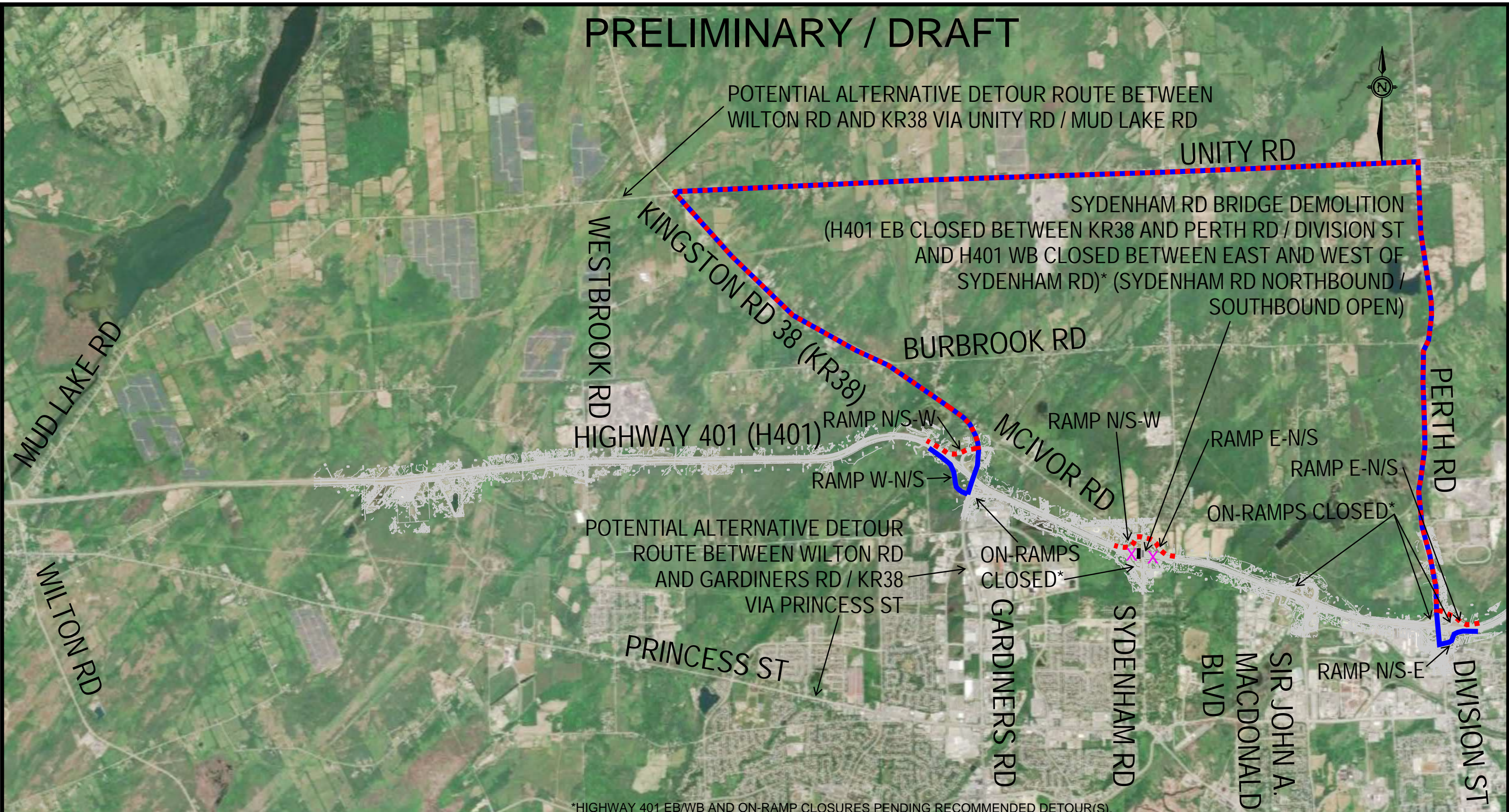
PRELIMINARY / DRAFT






*HIGHWAY 401 EB/WB AND ON-RAMP CLOSURES PENDING RECOMMENDED DETOUR(S).

<p>LEGEND</p> <p> EASTBOUND (EB) TRAFFIC</p> <p> WESTBOUND (WB) TRAFFIC</p> <p> H401 CLOSED*</p>	<p align="center">ALTERNATIVE 1</p> <ul style="list-style-type: none"> NEW KR38 BRIDGE IS CONSTRUCTED WEST OF EXISTING BRIDGE. HIGHWAY 401 EB/WB TRAFFIC DETOURS. *HIGHWAY 401 EB/WB AND ON-RAMP CLOSURES PENDING RECOMMENDED DETOUR(S). THE EXISTING BRIDGE IS DEMOLISHED WITH HIGHWAY 401 CLOSURES. 	<p align="center">PRELIMINARY DESIGN AND ENVIRONMENTAL ASSESSMENT</p> <p align="center">HIGHWAY 401 BRIDGE AND INTERCHANGE IMPROVEMENTS - WEST OF COLLINS CREEK TO EAST OF SYDENHAM ROAD</p> <p align="center">KR38 BRIDGE DEMOLITION DETOURS</p> <p align="center">ALTERNATIVE 1 - PLANNED HIGHWAY 401 CLOSURES WITH TRAFFIC DETOURS</p> <p align="center">GWP 4029-20-00</p> <p>    </p> <p align="right">DATE: MAR 2024</p>
--	---	---

PRELIMINARY / DRAFT



*HIGHWAY 401 EB/WB AND ON-RAMP CLOSURES PENDING RECOMMENDED DETOUR(S).

<p>LEGEND</p> <p>——— EASTBOUND (EB) TRAFFIC</p> <p>- - - - - WESTBOUND (WB) TRAFFIC</p> <p>X H401 CLOSED*</p>	<p align="center">ALTERNATIVE 1</p> <ul style="list-style-type: none"> NEW SYDENHAM RD BRIDGE IS CONSTRUCTED WEST OF EXISTING BRIDGE. HIGHWAY 401 EB/WB TRAFFIC DETOURS. *HIGHWAY 401 EB/WB AND ON-RAMP CLOSURES PENDING RECOMMENDED DETOUR(S). THE EXISTING BRIDGE IS DEMOLISHED WITH HIGHWAY 401 CLOSURES. 	<p align="center">PRELIMINARY DESIGN AND ENVIRONMENTAL ASSESSMENT</p> <p align="center">HIGHWAY 401 BRIDGE AND INTERCHANGE IMPROVEMENTS - WEST OF COLLINS CREEK TO EAST OF SYDENHAM ROAD</p> <p align="center">SYDENHAM ROAD BRIDGE DEMOLITION DETOURS</p> <p align="center">ALTERNATIVE 1 - PLANNED HIGHWAY 401 CLOSURES WITH TRAFFIC DETOURS</p> <p align="center">GWP 4029-20-00</p> <p>    </p> <p align="right">DATE: MAR 2024</p>
--	--	--